

Élan Cité

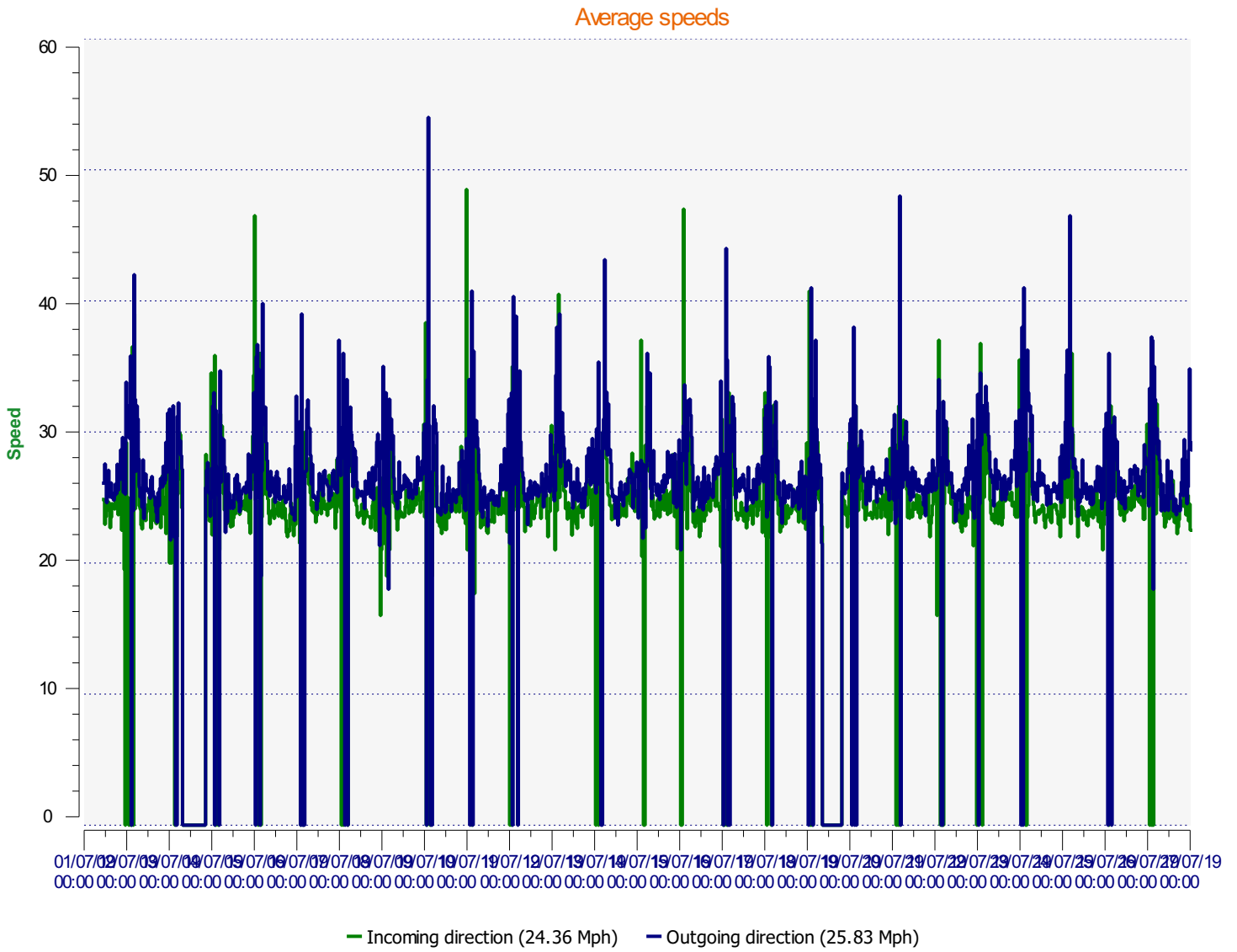


DÉTECTER • INFORMER • SÉCURISER

Start date: Monday, July 1, 2019 11:00 AM
End date: Monday, July 29, 2019 12:00 PM

Location:

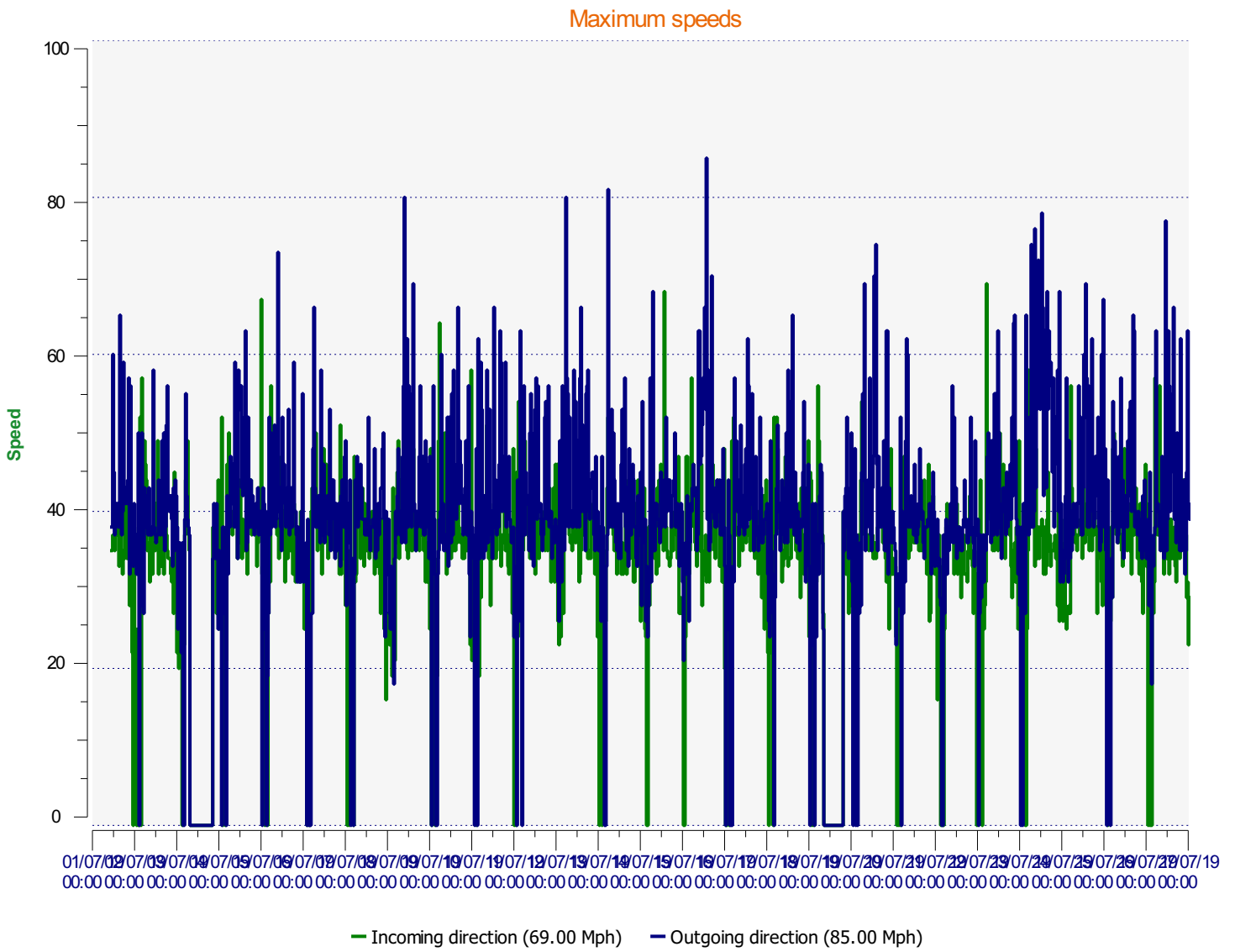
Comments:



Start date: Monday, July 1, 2019 11:00 AM
End date: Monday, July 29, 2019 12:00 PM

Location:

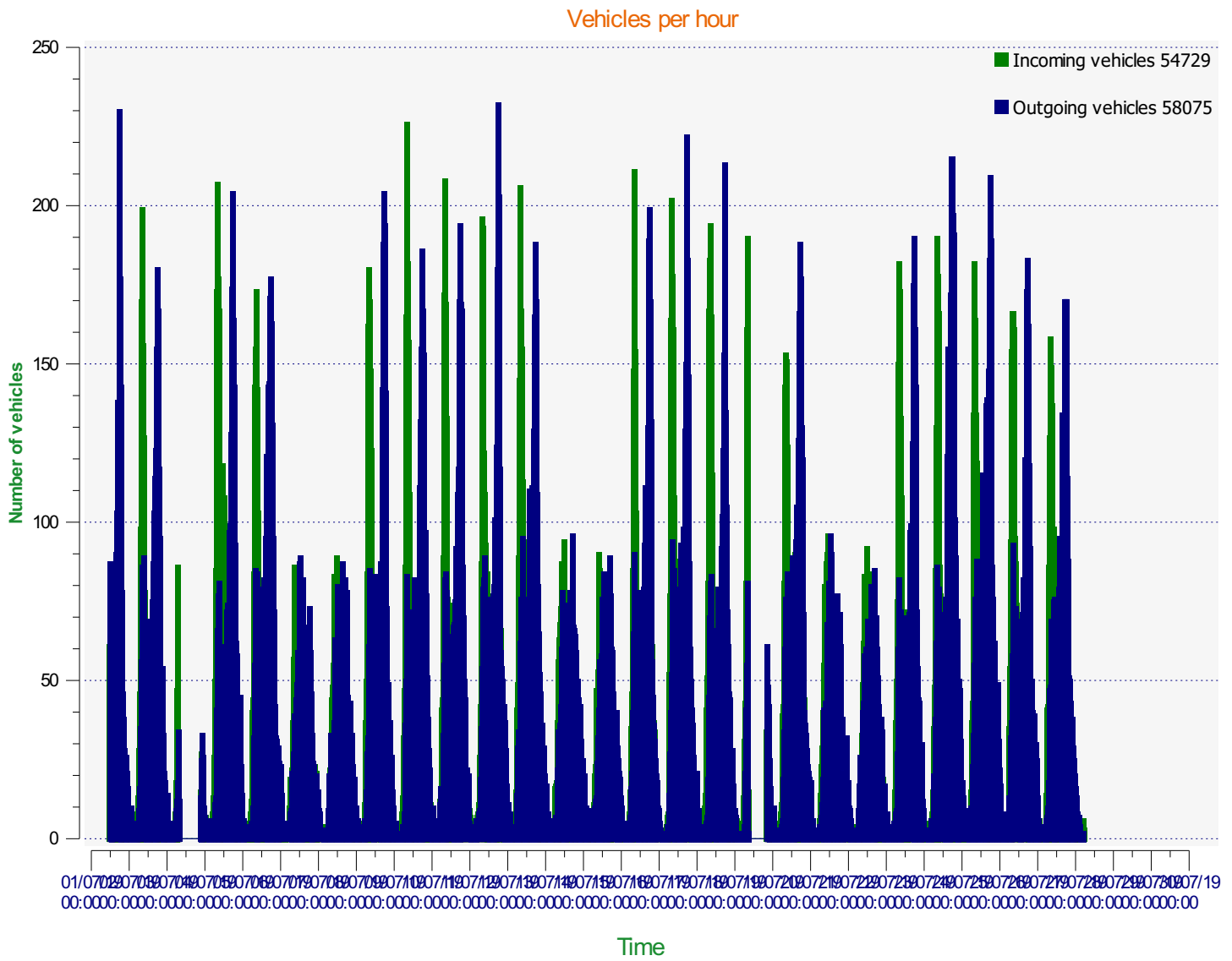
Comments:



Start date: Monday, July 1, 2019 11:00 AM
End date: Monday, July 29, 2019 12:00 PM

Location:

Comments:

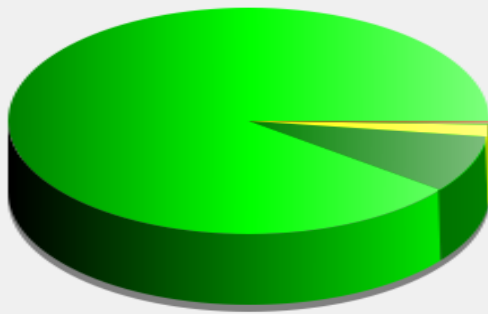


Start date: Monday, July 1, 2019 11:00 AM
End date: Monday, July 29, 2019 12:00 PM

Location:

Comments:

Incoming vehicles



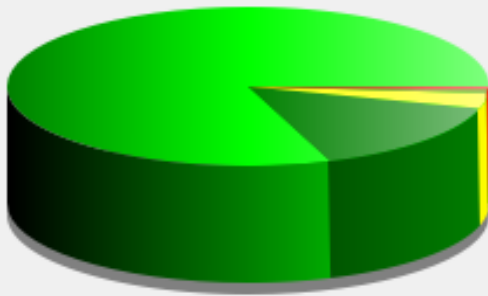
■	<= 30 Mph : 49,030 - (89.59 %)
■	31 - 35 Mph : 4,488 - (8.20 %)
■	36 - 40 Mph : 936 - (1.71 %)
■	41 - 45 Mph : 173 - (0.32 %)
■	46 - 65 Mph (et +) : 102 - (0.19 %)






Start date: Monday, July 1, 2019 11:00 AM
End date: Monday, July 29, 2019 12:00 PM

Location:

Comments:

Outgoing vehicles

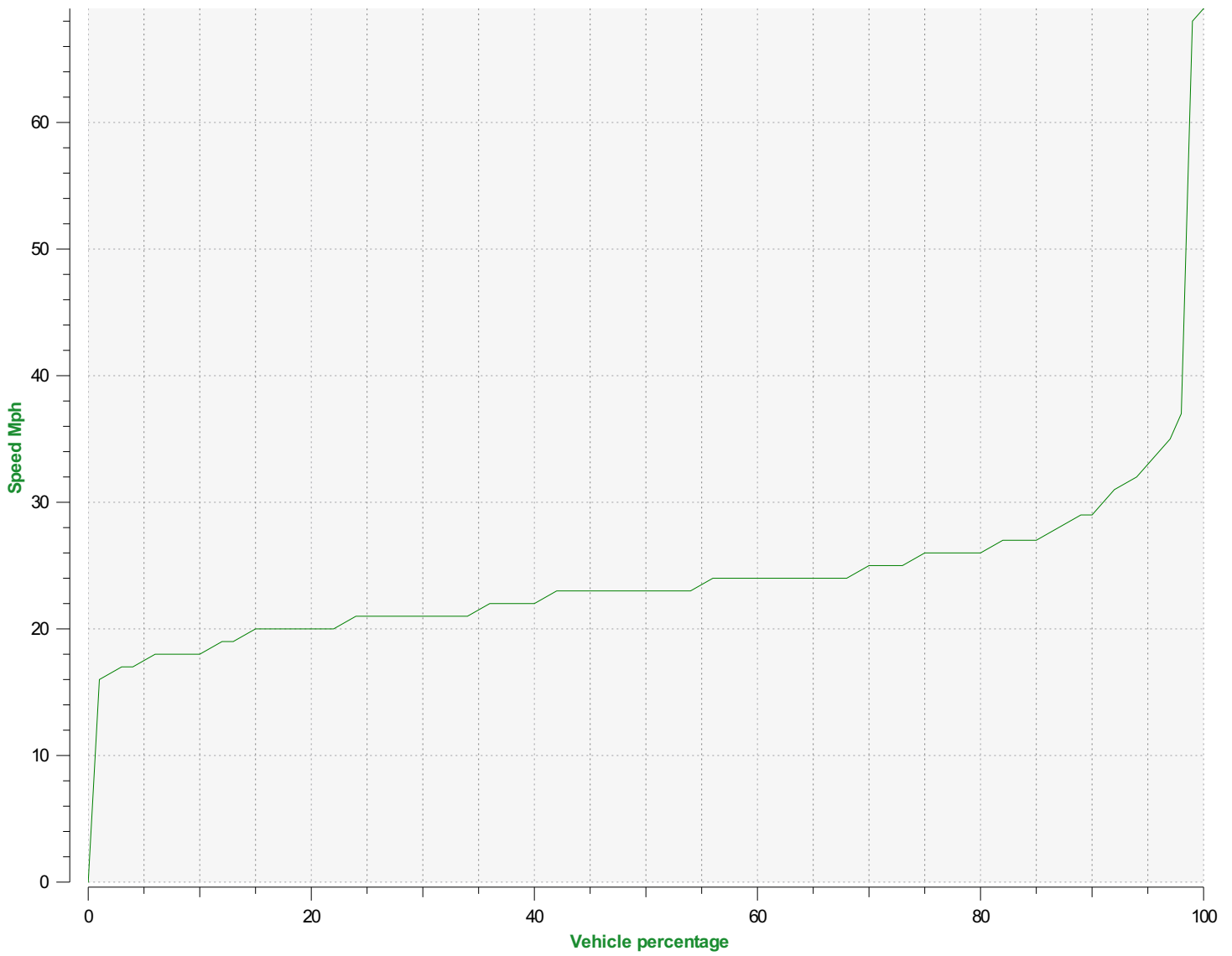


	<= 30 Mph : 46,770 - (80.53 %)
	31 - 35 Mph : 8,704 - (14.99 %)
	36 - 40 Mph : 1,827 - (3.15 %)
	41 - 45 Mph : 406 - (0.70 %)
	46 - 65 Mph (et +) : 368 - (0.63 %)

Start date: Monday, July 1, 2019 11:00 AM
End date: Monday, July 29, 2019 12:00 PM

Location:

Comments:



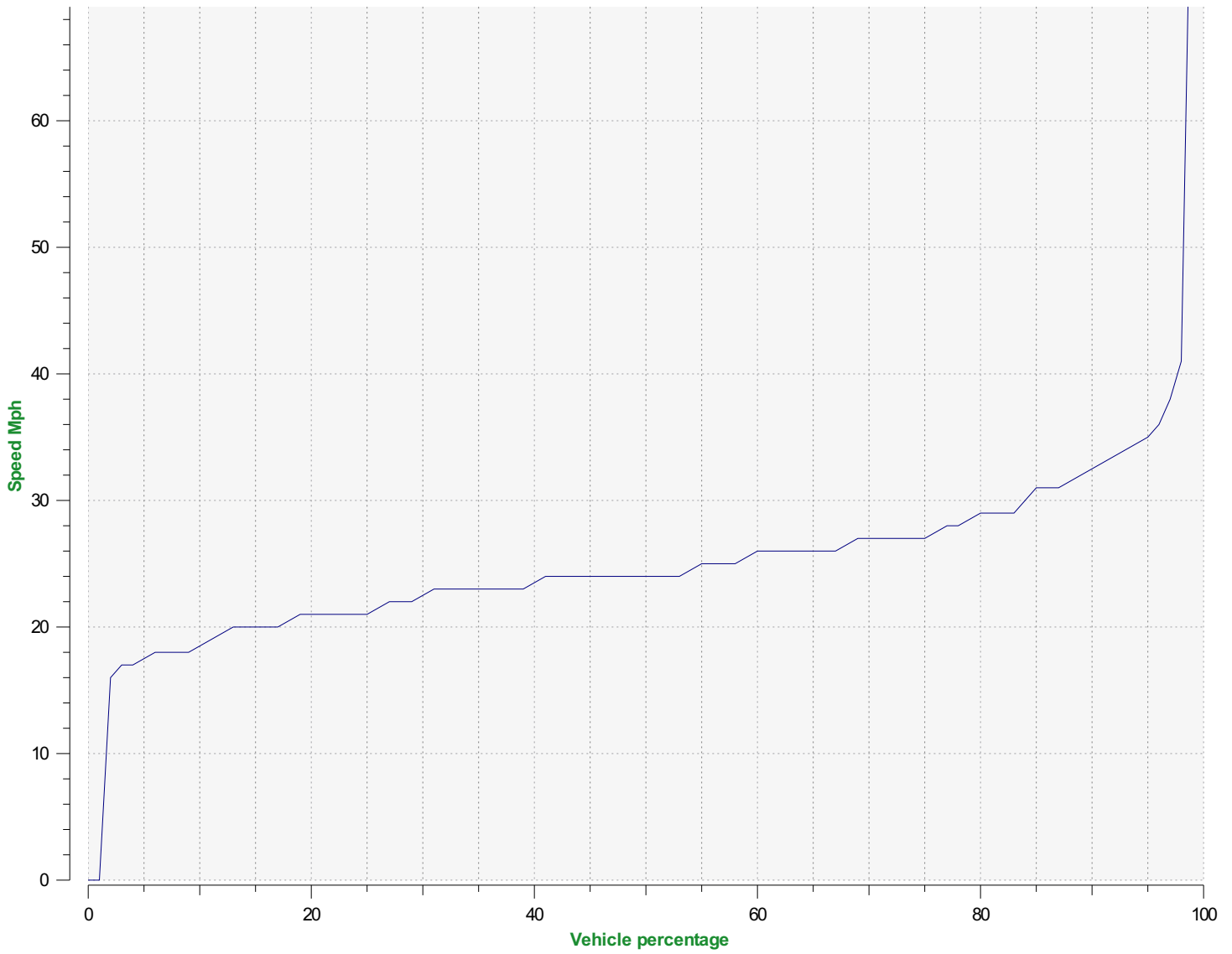
Speed percentiles (incoming)

V30: 21.00Mph **V50:** 23.00Mph **V85:** 27.00Mph

Start date: Monday, July 1, 2019 11:00 AM
End date: Monday, July 29, 2019 12:00 PM

Location:

Comments:



Speed percentile(outgoing)

V30: 22.00Mph **V50:** 24.00Mph **V85:** 31.00Mph

Start date: Monday, July 1, 2019 11:00 AM
End date: Monday, July 29, 2019 12:00 PM

Location:

Comments: